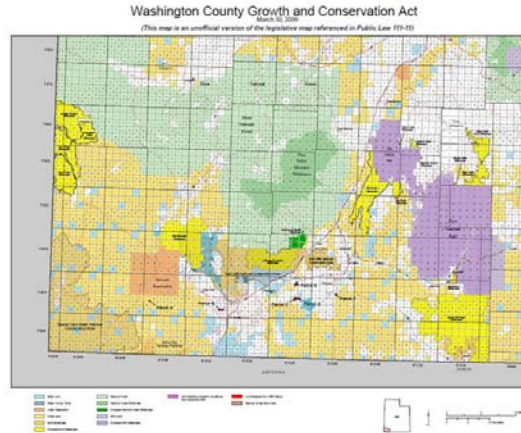


What *exactly* did the Washington County Lands Bill do?



[Washington County Growth and Conservation Act](#)

1. Established two National Conservation Areas:

- Red Cliffs National Conservation Area - 44,725 acres**
 Red Cliffs National Conservation Area, is located in a portion of Red Mountain Wilderness Area, Snow Canyon State Park, and north of cities of St George, Washington and Hurricane, it was designated by Congress in 2009. This 44,725-acre area was set aside to protect the desert tortoise and other rare and sensitive plants and animals from rapid development in Washington County. The Conservation Area's 130 miles of non-motorized trails provide world-class recreational opportunities while protecting crucial habitat.
- Beaver Dam Wash National Conservation Area – 63,488 acres (amended 10/09)**
 The Beaver Dam Wash National Conservation Area, located in southwestern corner of Washington County, Utah, was designated by Congress in 2009. This 68,083-acre area is in the transition zone between the Colorado Plateau, Great Basin, and Mojave Desert ecosystems and hosts a rich array of plant communities and wildlife. Visitors enjoy activities such as hiking, rock climbing, horseback riding, and wildlife viewing.

2. Established 15 Wilderness areas totaling 131,932 acres. Zion National Park was also established as a Wilderness area giving it another layer of protection, bringing the total number of Wilderness acres in Washington County to 256,338 acres.

	Acres		
• Beartrap Mountain	40	• Deep Creek North*	4,262
• Blackridge	13,015	• Doc's Pass	17,294
• Canaan Mountain	44,531	• Goose Creek*	98
• Cottonwood Canyon	11,712	• La Verkin Creek*	445
• Cottonwood Forest	2,643	• Red Butte	1,537
• Cougar Canyon	10,409	• Red Mountain	18,729
• Deep Creek*	3,284	• Slaughter Creek*	3,901
• Deep Creek North*	4,262	• Taylor Creek*	32
		• Zion National Park	124,406

* Created to protect creeks running into Zion National Park

3. Designated approximately 165.5 miles of the Virgin River and its tributaries across Federal land within and adjacent to Zion National Park to the National Wild and Scenic Rivers System.

- **Beartrap Canyon***
- **North Fork Virgin*
River**
- **Deep Creek***
- **Goose Creek***
- **Shunes Creek***
- **Kolob Creek***
- **Smith Creek***
- **LaVerkin Creek***
- **Willis Creek***
- **Taylor Creek**
- **North Fork of Taylor
Creek**
- **Middle Fork of Taylor
Creek***
- **South Fork of Taylor
Creek**
- **Timber Creek &
Tributaries**
- **Hop Valley Creek**
- **Current Creek**
- **Cane Creek**
- **North Creek Left &
Right**
- **Wildcat Canyon**
- **Little Creek**
- **Russell Gulch**
- **Grapevine Wash**
- **Pine Springs Wash**
- **Wolf Springs Wash**
- **Oak Creek***
- **Imlay Canyon**
- **Orderville Canyon**
- **Mystery Canyon**
- **Echo Canyon**
- **Behunin Canyon**
- **Heaps Canyon**
- **Birch Creek**

* Eleven river segments totaling 19 miles of the Virgin River drainage are managed by BLM and all but one are classified as “wild”. Each of the segments flows into or out of Zion National Park and a majority are within wilderness areas that were also designated in the Lands Bill.

